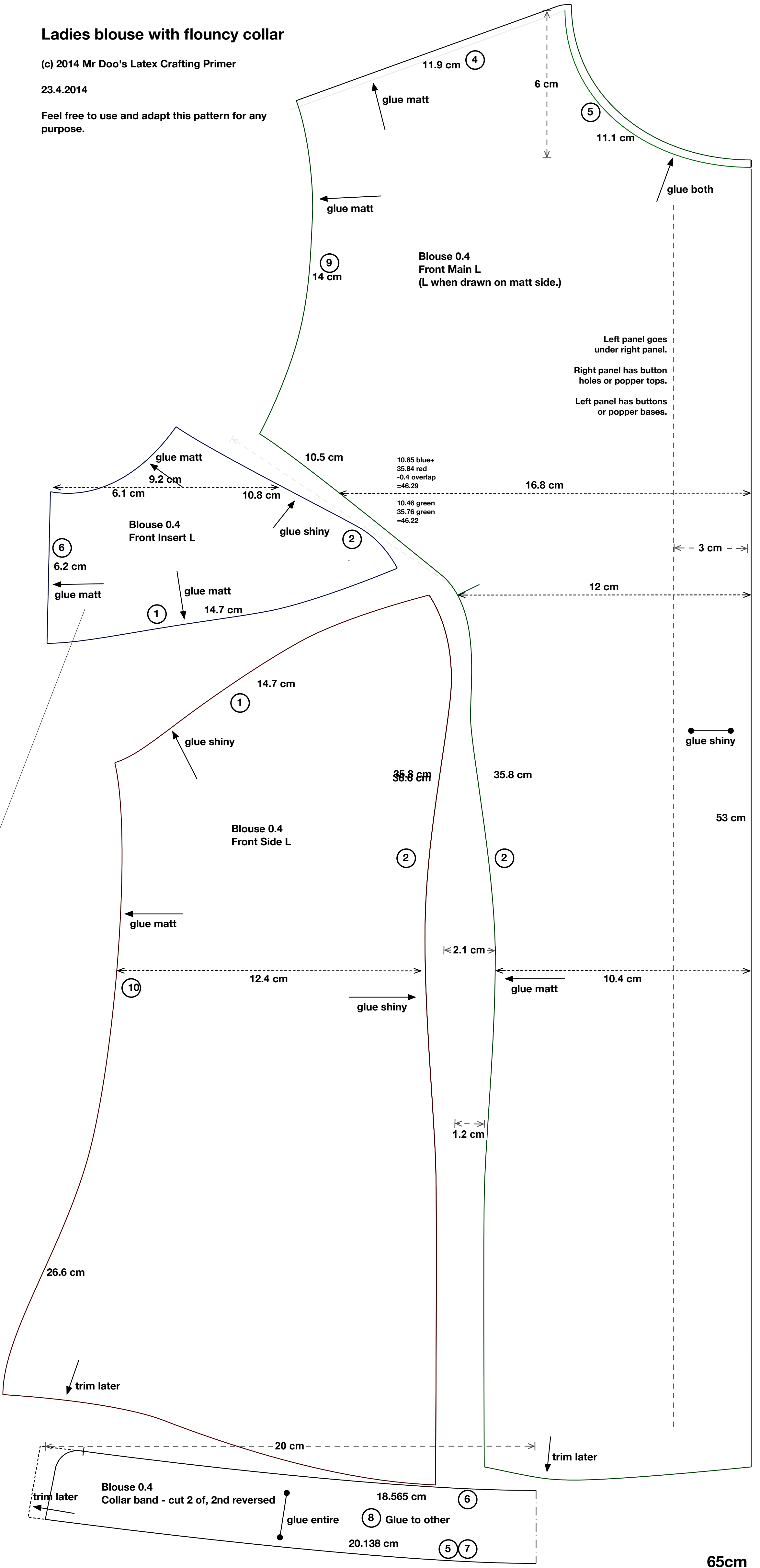


Ladies blouse with flouncy collar

(c) 2014 Mr Doo's Latex Crafting Primer

23.4.2014

Feel free to use and adapt this pattern for any purpose.



11.9 cm (4)

6 cm

(5)

11.1 cm

glue matt

glue both

glue matt

(9)
14 cm

Blouse 0.4 Front Main L
(L when drawn on matt side.)

Left panel goes under right panel.
Right panel has button holes or popper tops.
Left panel has buttons or popper bases.

glue matt

9.2 cm

10.5 cm

10.85 blue+
35.84 red
-0.4 overlap
=46.29

10.46 green
35.76 green
=46.22

16.8 cm

Blouse 0.4 Front Insert L

glue shiny (2)

3 cm

(6)
6.2 cm

glue matt

glue matt (1)
14.7 cm

12 cm

(1)
14.7 cm

glue shiny

glue shiny

38.8 cm

35.8 cm

Blouse 0.4 Front Side L

(2)

(2)

glue matt

2.1 cm

(10)

12.4 cm

glue shiny

glue matt (10.4 cm)

1.2 cm

26.6 cm

trim later

trim later

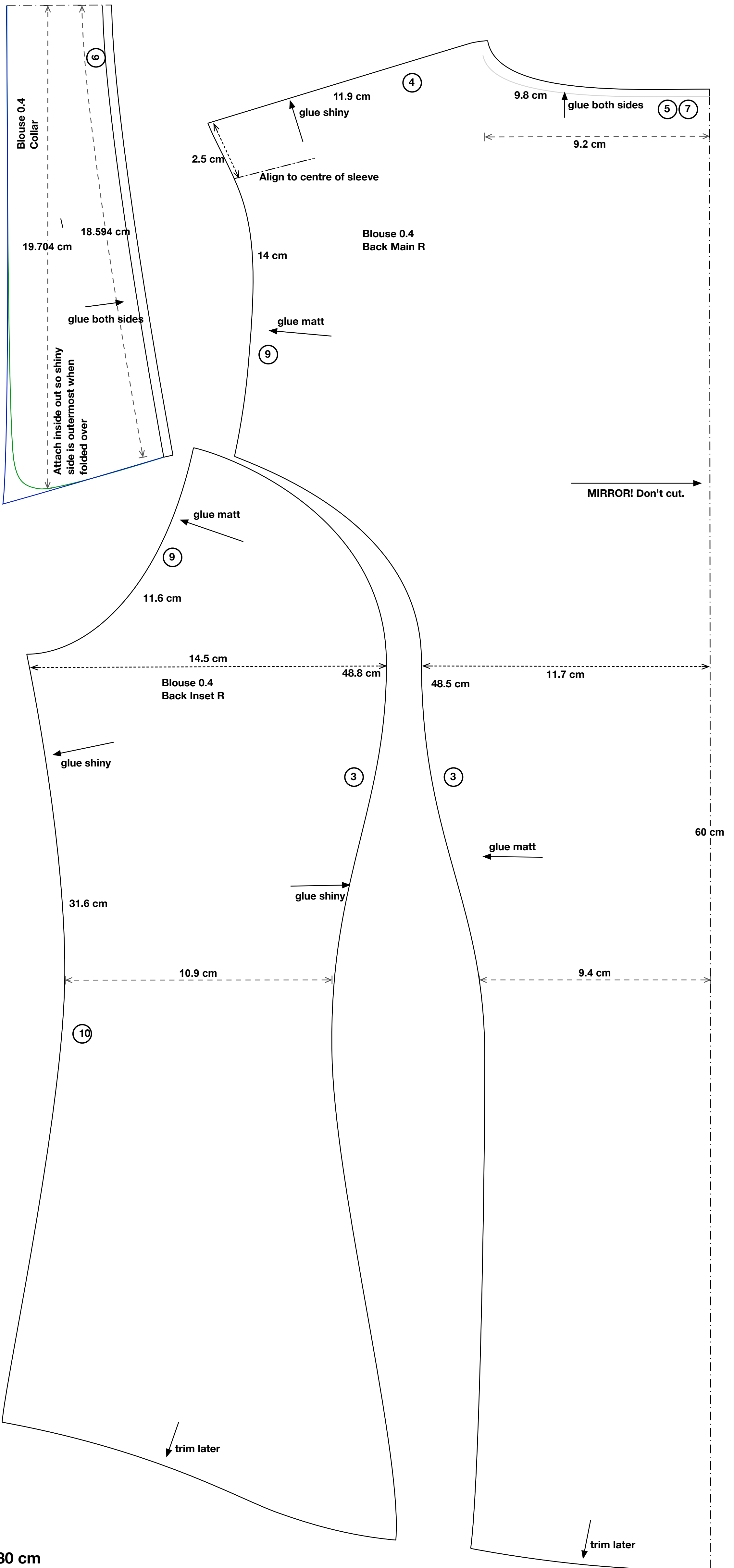
Blouse 0.4 Collar band - cut 2 of, 2nd reversed

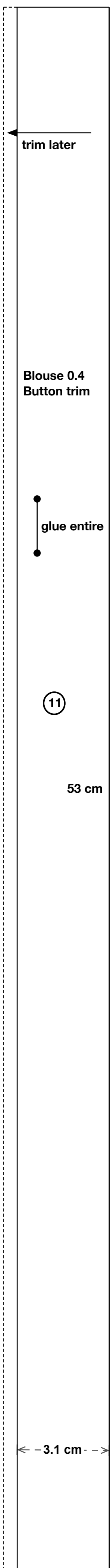
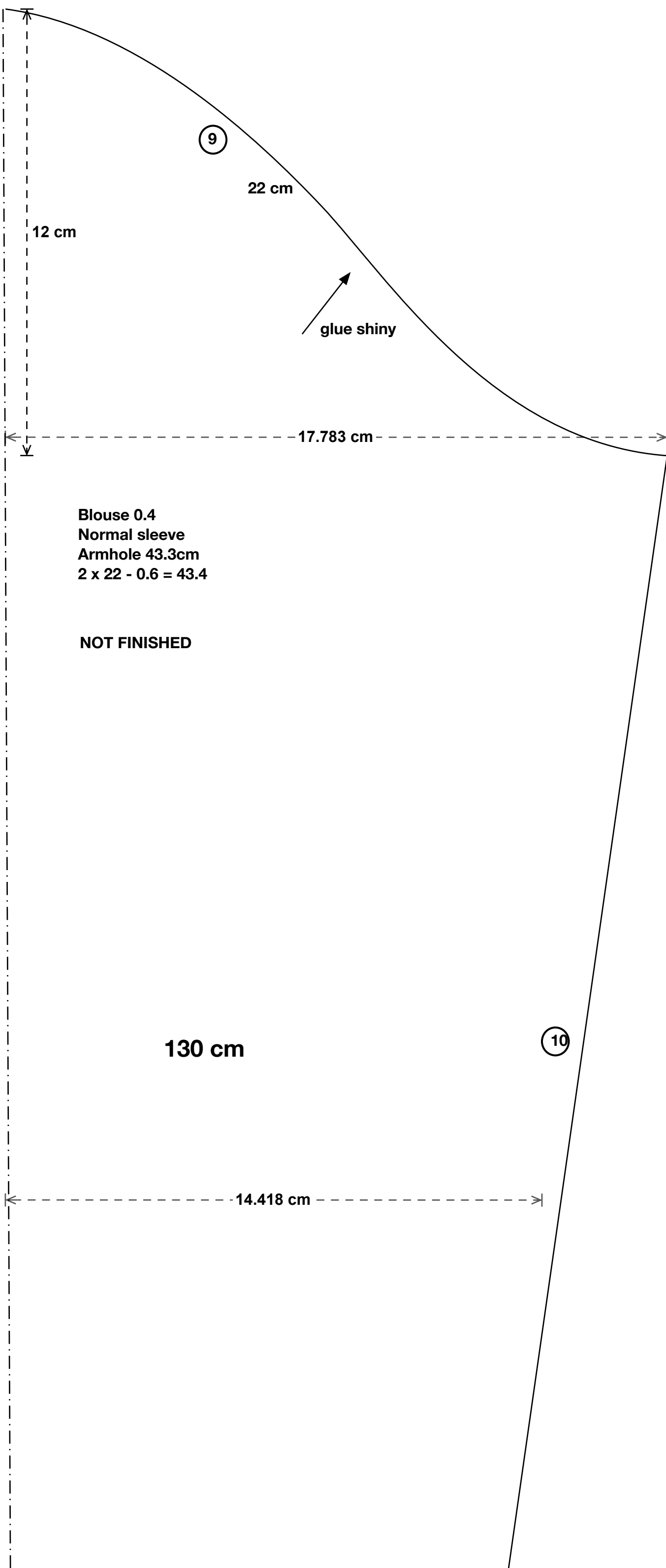
18.565 cm (6)

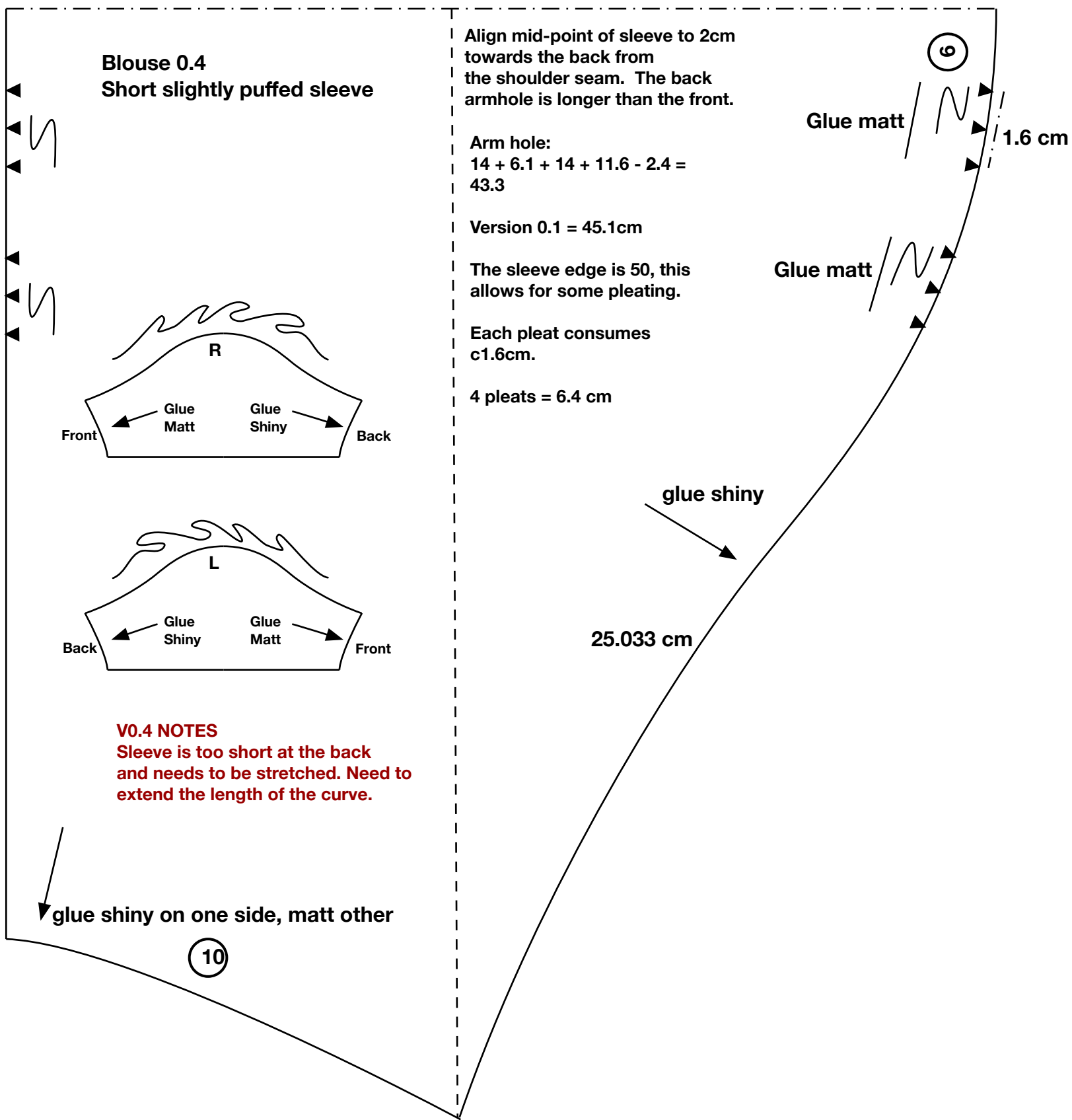
glue entire (8)

Glue to other

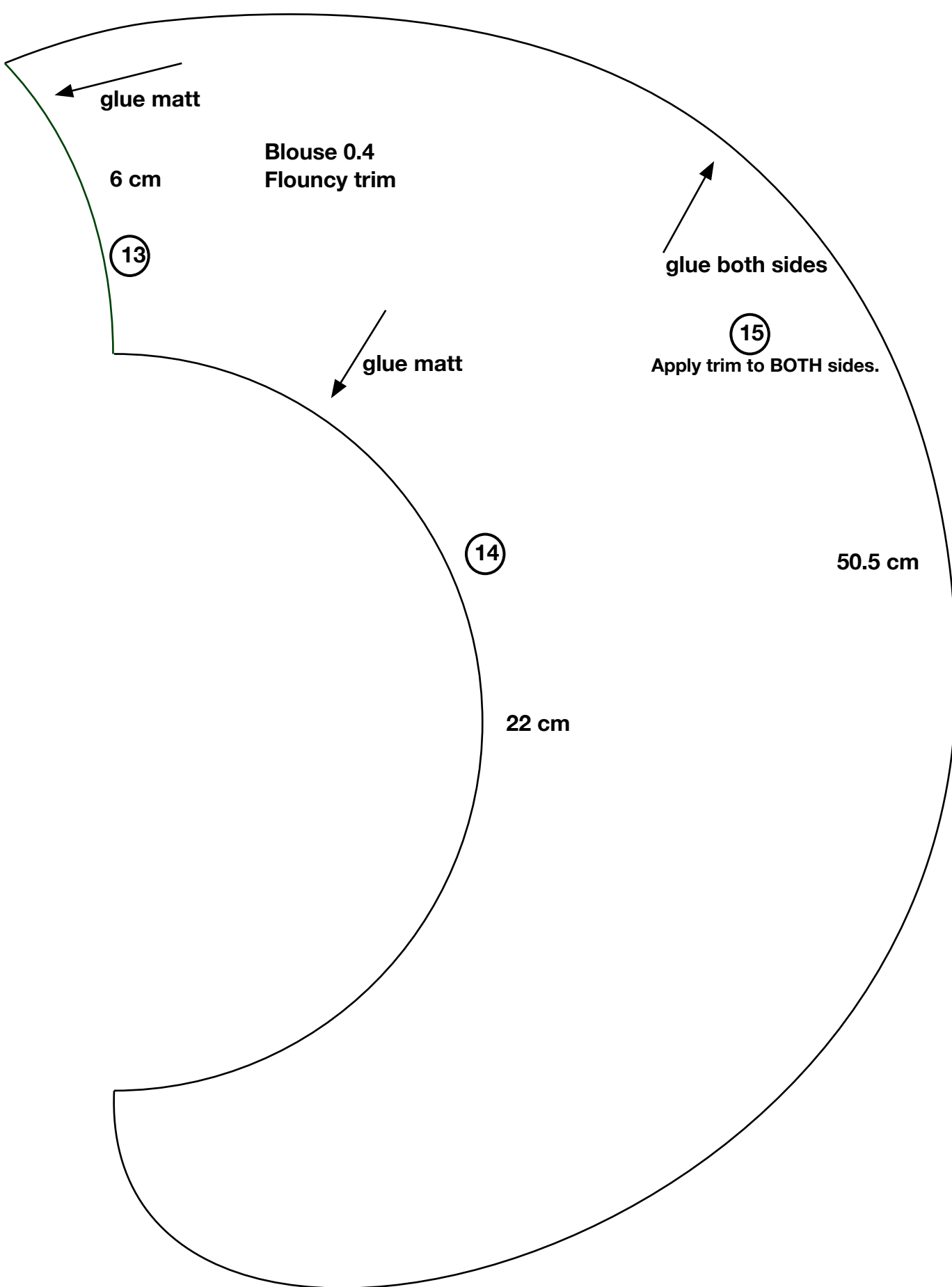
20.138 cm (5) (7)







50.1 cm



Blouse 0.3
Edging for
Flouncy trim

