

**Mrs. Claus Dress 0.4**

(c) Mr Doo's Latex Primer  
<http://mrdoolatexprimer.wordpress.com>  
 Dress with short sleeves and round neck.  
 Print page length 105cm

**Change history**  
 0.1 17/11/2013 started, based on blouse 0.3  
 0.2 23/11/2013 continued drafting  
 0.3 28/11/2013 fixed error with sizing  
 0.4 04/12/2013 finished pattern for construction  
 0.4 002 19/11/2014 tidied up notation



**5.6 cm**  
Cut with a generous allowance to be trimmed after construction.

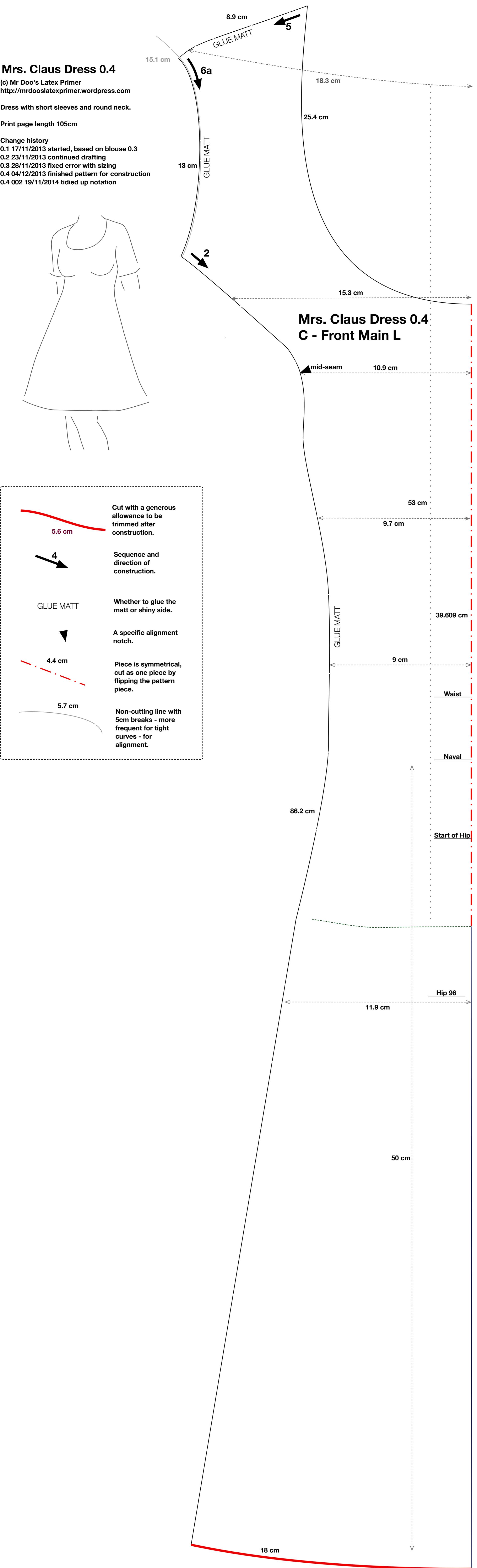
**4**  
Sequence and direction of construction.

**GLUE MATT**  
Whether to glue the matt or shiny side.

**4.4 cm**  
A specific alignment notch.

**5.7 cm**  
Piece is symmetrical, cut as one piece by flipping the pattern piece.

**5.7 cm**  
Non-cutting line with 5cm breaks - more frequent for tight curves - for alignment.



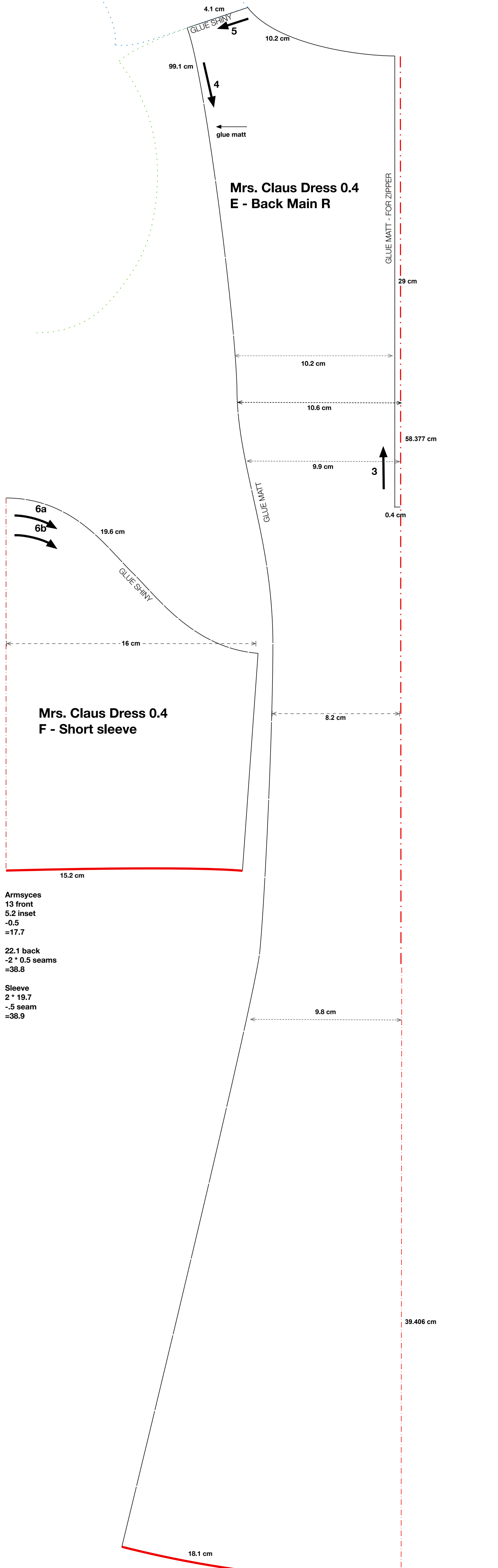
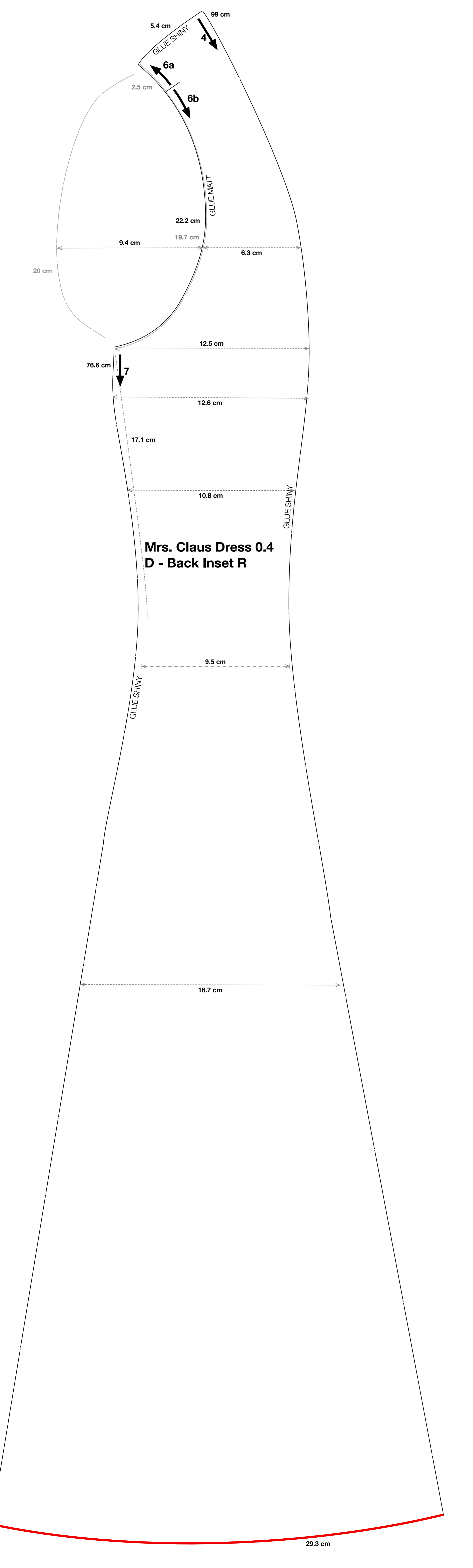
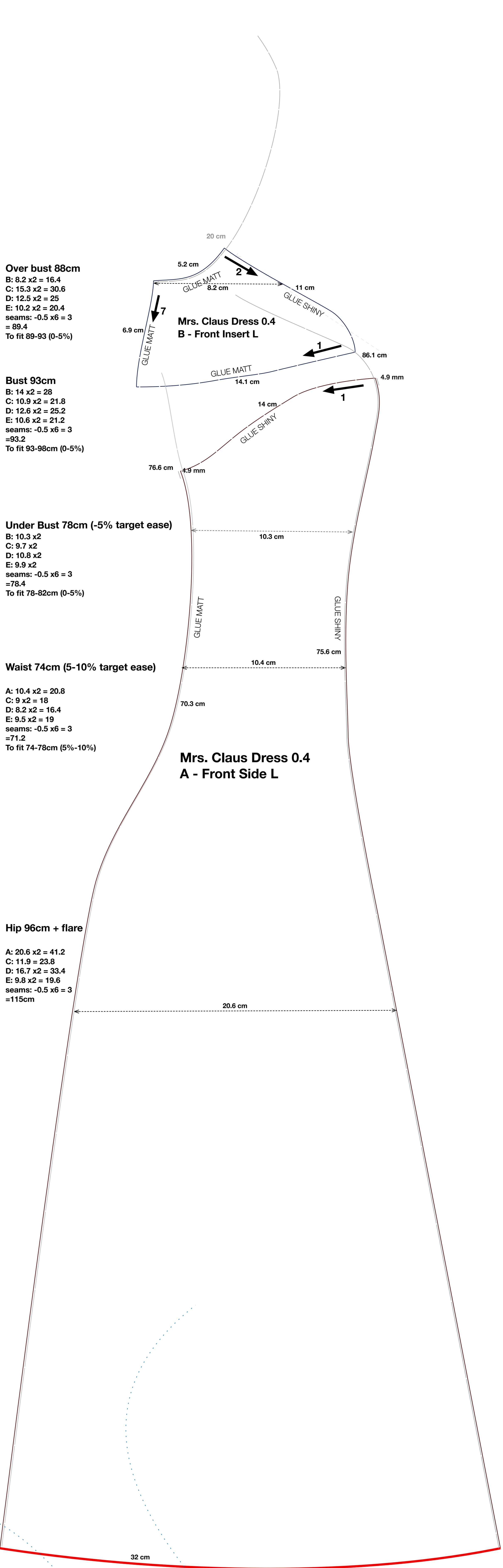
**Over bust 88cm**  
 B: 8.2 x2 = 16.4  
 C: 15.3 x2 = 30.6  
 D: 12.5 x2 = 25  
 E: 10.2 x2 = 20.4  
 seams: -0.5 x6 = 3  
 = 89.4  
 To fit 89-93 (0-5%)

**Bust 93cm**  
 B: 14 x2 = 28  
 C: 10.9 x2 = 21.8  
 D: 12.6 x2 = 25.2  
 E: 10.6 x2 = 21.2  
 seams: -0.5 x6 = 3  
 = 93.2  
 To fit 93-98cm (0-5%)

**Under Bust 78cm (-5% target ease)**  
 B: 10.3 x2  
 C: 9.7 x2  
 D: 10.8 x2  
 E: 9.9 x2  
 seams: -0.5 x6 = 3  
 = 78.4  
 To fit 78-82cm (0-5%)

**Waist 74cm (5-10% target ease)**  
 A: 10.4 x2 = 20.8  
 C: 9 x2 = 18  
 D: 8.2 x2 = 16.4  
 E: 9.5 x2 = 19  
 seams: -0.5 x6 = 3  
 = 71.2  
 To fit 74-78cm (5%-10%)

**Hip 96cm + flare**  
 A: 20.6 x2 = 41.2  
 C: 9 x2 = 18  
 D: 11.9 x2 = 23.8  
 E: 16.7 x2 = 33.4  
 F: 9.8 x2 = 19.6  
 seams: -0.5 x6 = 3  
 = 115cm



**Armsyces**  
 13 front  
 5.2 inset  
 -0.5  
 = 17.7

**22.1 back**  
 -2 \* 0.5 seams  
 = 38.8

**Sleeve**  
 2 \* 19.7  
 -5 seam  
 = 38.9