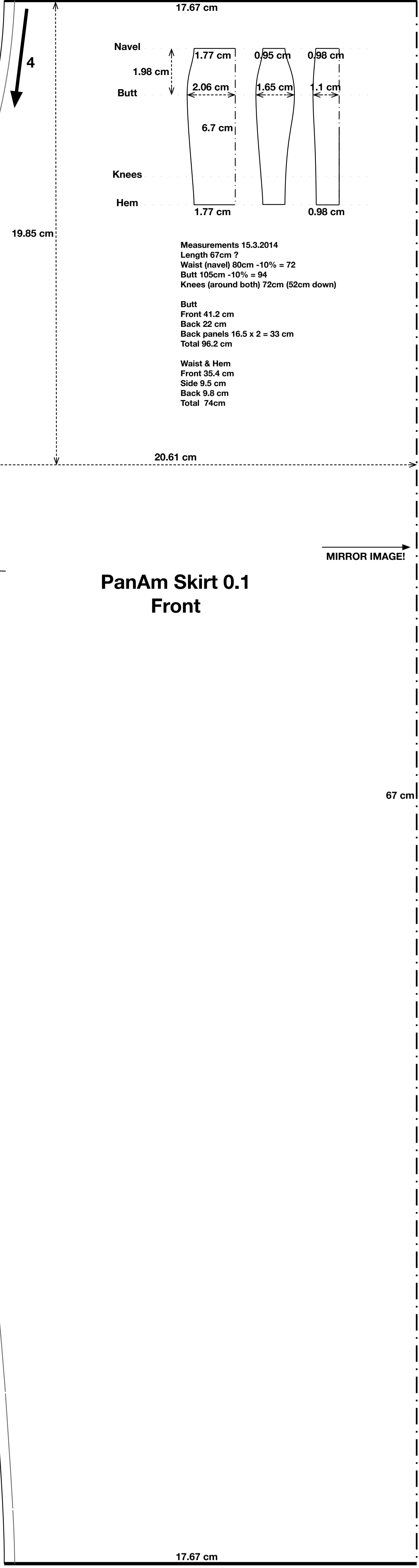


# PanAm Skirt 0.2

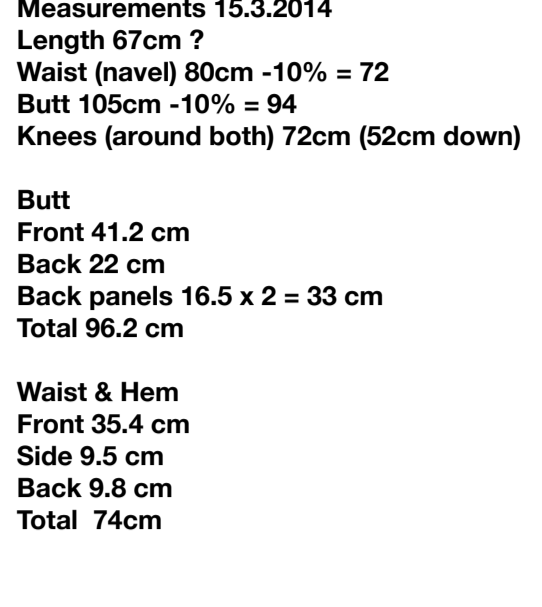
(c) Mr Doo's Latex Primer  
<http://mrdoolatexprimer.wordpress.com>

Dress with hidden pleat in rear

Change History  
 19.7.2014 0.1 Based on Skirt 0.1. Added folded pleat.  
 20.7.2014 0.2 Modified instructions. Halved the width of the pleat inset.



## PanAm Skirt 0.1 Front



Measurements 15.3.2014  
 Length 67cm ?  
 Waist (navel) 80cm -10% = 72  
 Butt 105cm -10% = 94  
 Knees (around both) 72cm (52cm down)

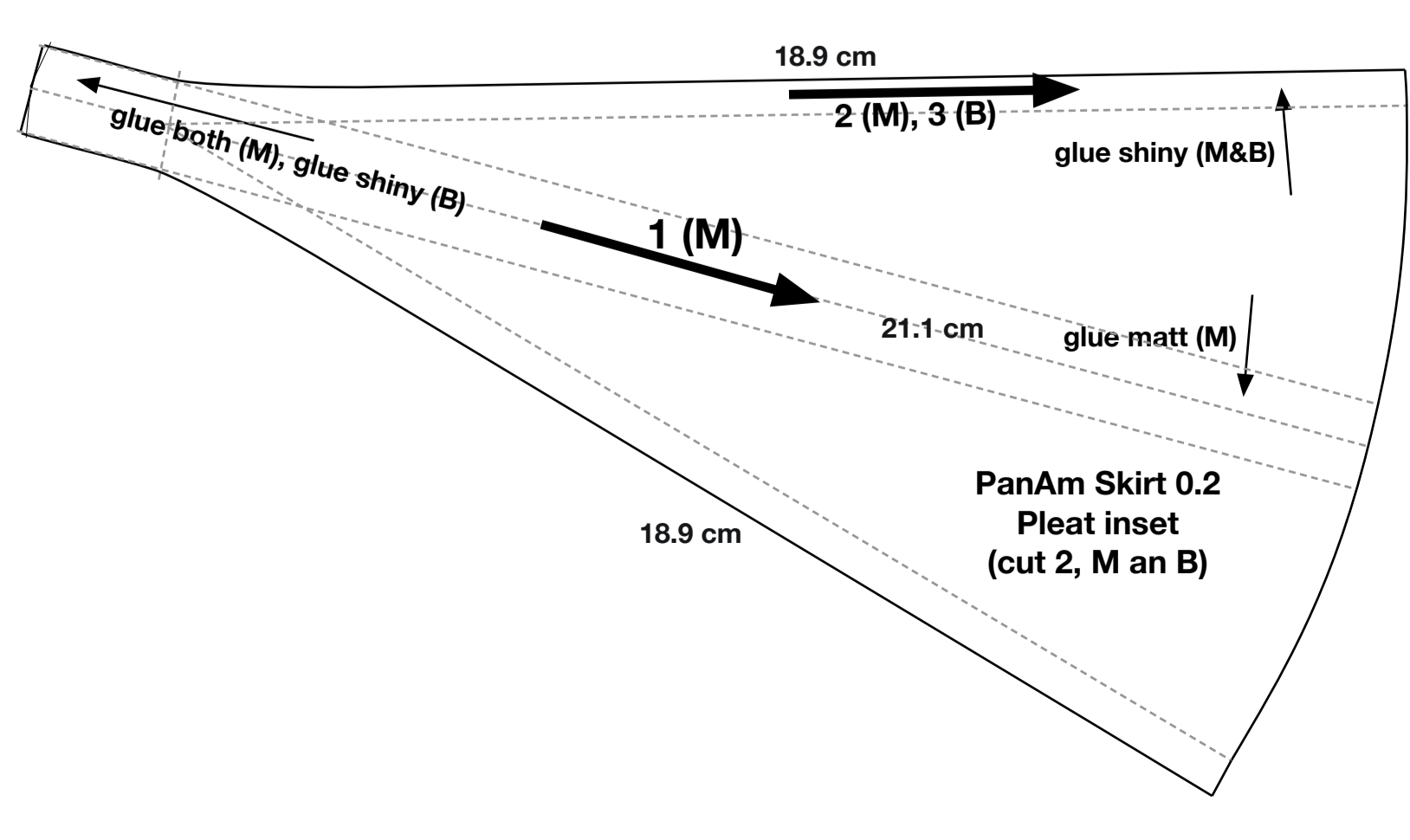
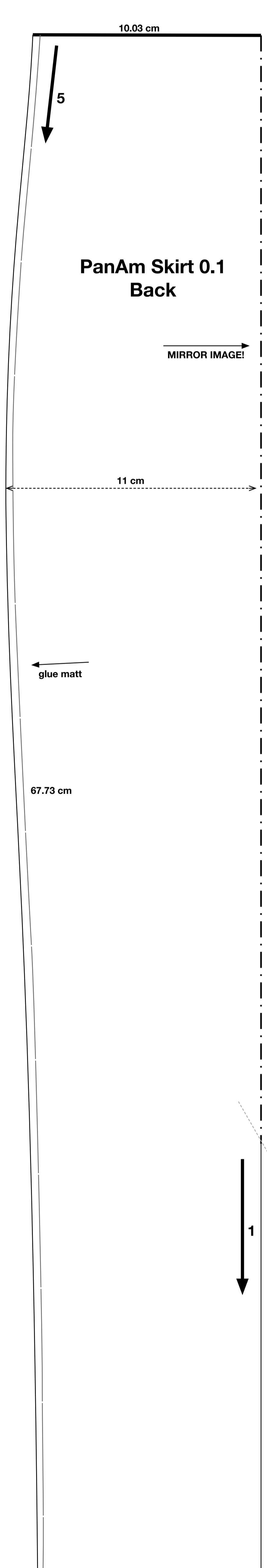
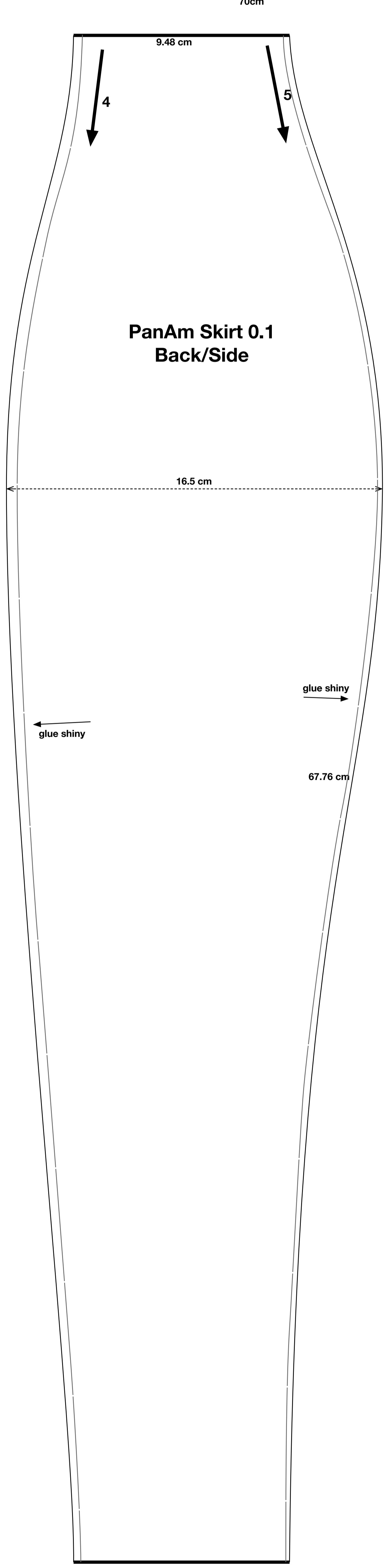
Butt  
 Front 41.2 cm  
 Back 22 cm  
 Back panels 16.5 x 2 = 33 cm  
 Total 96.2 cm

Waist & Hem  
 Front 35.4 cm  
 Side 9.5 cm  
 Back 9.8 cm  
 Total 74cm

- Cut with a generous allowance to be trimmed after construction.
- Sequence and direction of construction.
- Whether to glue the matt or shiny side.
- A specific alignment notch.
- Piece is symmetrical, cut as one piece by flipping the pattern piece.
- Non-cutting line with 5cm breaks.

## PanAm Skirt 0.1 Back/Side

## PanAm Skirt 0.1 Back



## PanAm Skirt 0.2 Pleat inset (cut 2, M an B)